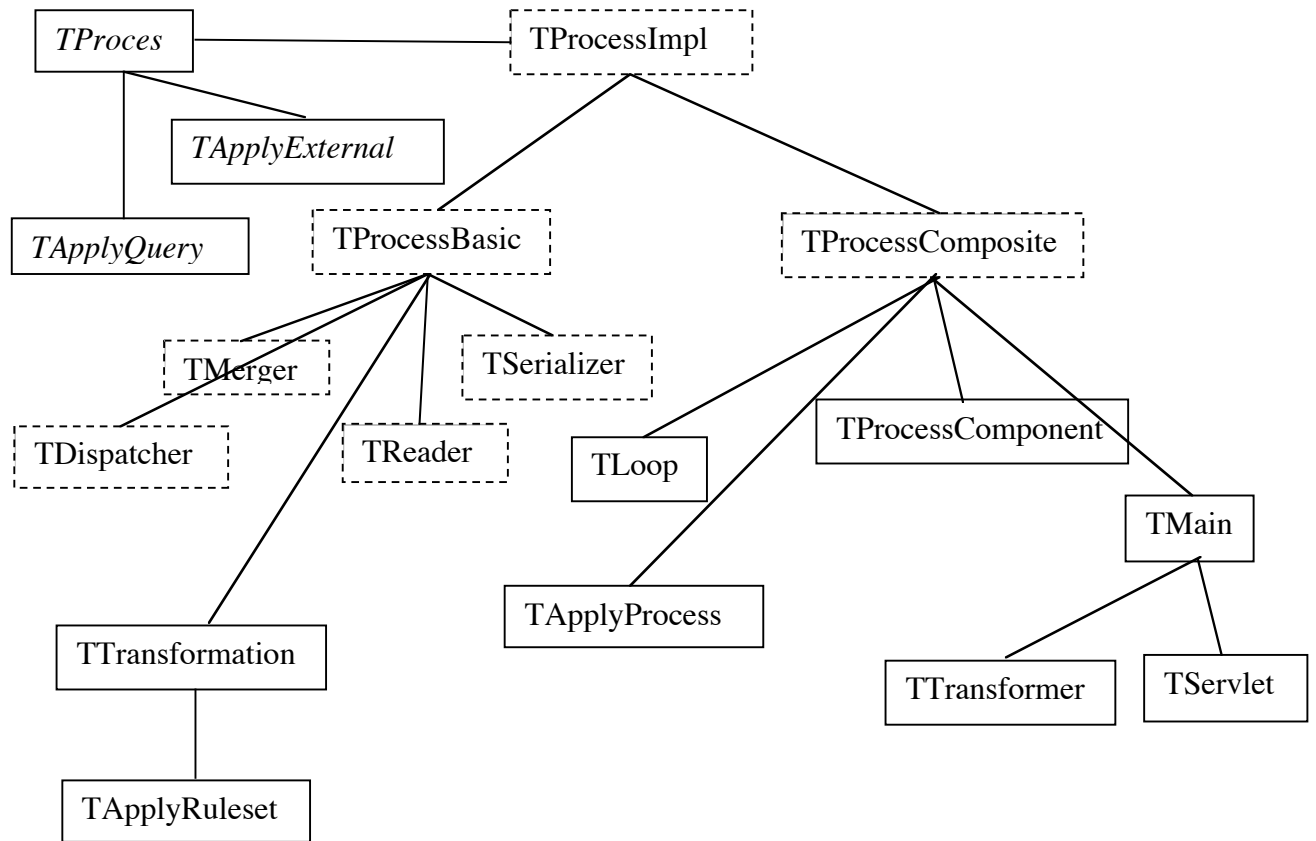


The set of classes instantiated at execution (through stdlib and tmcontrib possibly).



The instanciator class `TProcessFactory`

The linking classes `XML_Port` and `TChannel`

The generic iterator class `TIterator` (implements `j.u.Enumeration`)

Two generic helper classes `TMHandler` (extends `o.x.s.ContentHandler`)
and `BufferingHandler` (implements `TMHandler`)

An utility class `ContentHandlerInfo` (could be integrated to `BufferingHandler` or withdrawn).

Currently used classes in `stdlib`, are

`TApplyQuery`, `TApplyExternal`, `Tmerger`, `Tserializer`, `Tdispatcher`, `Treader`

`TApplyRuleset` and `TApplyProcess` are instanciated in internal

`Tmain`, `Tservlet`, `Ttransformer` should be used in internal

`Ttransformation` is an utility class that can is also used by `tmq` and `xslt`.